



## Commentary Unit With Talkback And Dante Network Audio Interface



**VITA BB PLUS**

Network Audio Commentary Interface

### Highlights

- BB BIG Buttons!
- Two Assignable 4 Wire Circuits
- Dante® & AES67 Compatible
- Monitoring With Left/Both/Right Switching
- Network Remote Control & Configuration
- Power Via PoE

### Overview

The VITA BB PLUS is a very powerful Dante® network audio interface, in a traditional desktop style. It has a mic/line input and headphone monitoring connection for a single user, and contains two 4 wire circuits. One of these is typically used as an on air channel, and the other as a talkback channel.

The high quality microphone input, with the GlenSound Referee compressor, makes the Vita BB Plus suitable for on air commentary use, perfect for a small OB or in an off-tube booth.

The flexibility of the talk button configurations means that the Vita BB Plus can also be used as a talkback unit as part of a Dante® / AES67 network.

The Vita BB Plus can connect to any Dante® or AES67 network, or to other audio equipment via GlenSound's own Dante® interface units.

Commentary Interface





- Two Four Wire Circuits**

The VITA BB PLUS has two 4 wire circuits. These are typically used as main programme on air, with a separate talkback circuit. The large push buttons for each circuit are configurable and can operate in different modes, to allow configuration for different types of uses:

  - Latching on/off
  - Momentary push to talk (PTT)
  - Intelligent mode where a short tap is latching, but a longer hold becomes momentary
  - Always on and mutes when pressed (cough)
  - Pressing one button mutes the other circuit (talkback)
- Headphone Monitoring**

There are 6.35mm and 3.5mm jack sockets for headphone monitoring on both the front & rear of the unit. Each of the two 4 wire inputs can be selected to be in the left ear, right ear, or both ears of the headphones, depending on the user's preference. The level of each input can also be independently selected.

The headphone amplifier is intelligent and capable of driving correct levels into low or high impedance headphones and capable of connecting directly to both stereo or mono headphones and earpieces.

The headphone monitor also includes sidetone (at a programmable level) - sidetone is the commentator's own voice.
- Single Input**

The Vita BB Plus is a single user unit, with one high quality input. The input is mic/mic+48v/line switchable, on a 3 pin XLR, with a variable gain control. As the Vita BB Plus can be used for on air broadcast, Glensound's Referee compressor limiter is used to control the audio levels and prevent any clipping. The Referee compressor has been developed over many years of working with sports commentators, and provides a gently increasing compression as the input signal approaches clipping. In normal use the compressor is not active as it only starts working as clipping approaches, so normal dynamic range is maintained.



- Network Audio Link**  
The VITA BB PLUS is Dante®/ AES67 network audio compatible. The network connection is via a single Neutrik XLR RJ45. This link carries:

  - 2 audio inputs
  - 2 audio outputs
  - Power over Ethernet (PoE)

**Audio connections across the network can be to:**

- Another VITA as a point to point 4W connection
  - An Express<sup>ip</sup> Commentary Unit, an Inferno Commentary Unit or a GS-FW012 ip 4 wire unit as part of a talkback setup.
  - An AoIP44, DARK88 or DARK 1616 audio input/output interface
  - Any other Dante compatible unit
- Power**  
The Vita BB Plus is powered by PoE from a network switch or PoE midspan power supply.



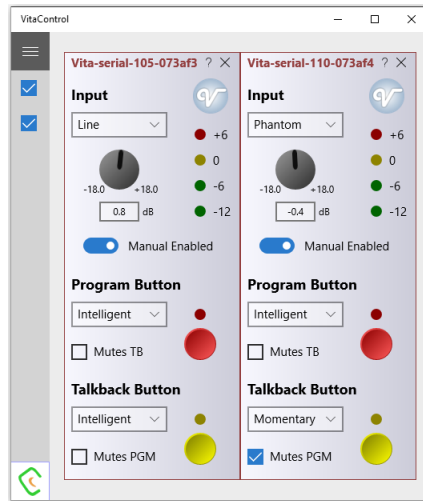
- PPM Meter**  
There is a simple to use 4 segment PPM meter on the front panel of the VITA BB Plus. The meter indicates the outgoing level in dBs and provides indication of the level in 6dB steps from -12 to +6.



## VITA CONTROLLER

### Network Remote Control & Configuration

#### Features



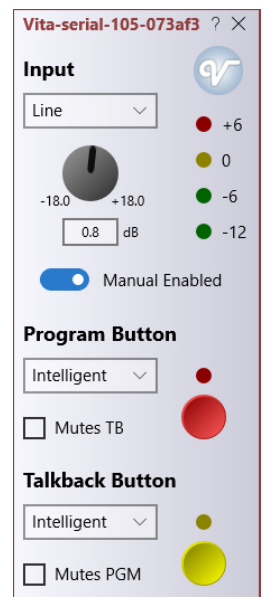
*Vita Controller gives full remote control of mic on/off, gain levels and configuration of any number of different VITAs connected across a network.*

- Network Remote Control**  
 Vita Controller is a Windows 10 PC application, and it can be downloaded for free from <http://www.glensound.com/product-details/vita/> . When launched, Vita Controller scans the network for all connected Vita and Vita Plus units which show up on the left hand side. The function of each Vita/ Vita Plus/ Vita BB Plus is replicated on Vita Controller, with each unit receiving its own visual controller module.
- Remote Control Of Mic Gain Levels**  
 There are settings to select mic, mic +48v, or line inputs. A rotary control then acts as the gain level up and down. This all operates in real time.
- Talk Button Configuration**  
 Directly clicking on the program or talkback button on Vita Controller will work in the same way as if it was pressed locally on the Vita itself. This allows an engineer to have remote control of the mic on/off function. Each button can be set independently in the following modes:

- Momentary - button is active only when held
- Latching - a single press locks the button on or off
- Intelligent - a short press locks the button, where a longer press acts as momentary
- Cough
- Always ON
- Always OFF

The operation of a button can also mute the other circuit. For example, this is used to mute the program mic when the talkback button is pressed.

- Local Control Security**  
 Vita Controller can disable the local controls on the unit. This gives security to the engineer using Vita Controller that they have full control of all levels and operation and cannot be overridden. If the local controls in Vita Controller are not disabled, adjustment on the local unit will override the remote setting.



# VITA BB PLUS

## Designed For Sport News & Events

### Specification

#### AUDIO

##### Mic Input Gain Range

-18dB to +12dB

##### Dynamic Mic Line Up

58dB

##### Mic + Phantom Power Line Up

42dB

##### Line Input Line Up

0dBu (Gain range +/-15dB)

##### Mic Input Impedance

2k4

##### Line Input Impedance

>30k

##### Equivalent Input Noise

124dBu  
(22-22kHz RMS terminated 300 Ohms)

##### Maximum Input Level Before Clipping

Dynamic Mic: -2dBu  
Mic + 48V PH: +12dBu  
Line: +18dBu

##### Frequency Response

Mic: > +/-0.25dB 50Hz to 22kHz  
(-2 @ 25Hz)  
Line: >= -0.1dB 22Hz to 22kHz

##### THD + Noise (Ref +8dBu)

100Hz = 0.016%  
1kHz = 0.012%  
10kHz = 0.011%

#### POWER

##### Consumption

<7 Watts

##### PoE

May be powered by PoE

##### Power On LED

Bright Blue

#### INCLUDED ITEMS

##### Handbook

Physical A5 (download also available)

##### Rj45 Network Cable

2 metre Cat5 Rj45plug /Rj45plug cable

##### Headphone Impedance

32 to 1000 Ohms  
(Auto output level to match impedance)

##### Maximum Headphone Output

+15.8dB into 600 Ohms

##### Headphone Frequency Response

>= -0.1dB 22Hz to 22kHz

##### Headphone Noise

-74dB @ lineup (residual noise)

##### Headphone THD + Noise (ref =8dBu)

0.008% @ 1kHz

##### Headphone Volume Pot Range

+10dB to Off (+10dB to -20dB configuration option)

##### Dante Network Interface

Sample Frequency: 48 - 96kHz  
Resolution: 24 Bit

#### REMOTE CONTROL

##### General

Windows 10 application. Direct install on PC.  
(Not App store download)

#### PHYSICAL

##### Size

114 x 172 x 81mm (WxDxH)

##### Weight

720g

##### Mechanics

All aluminium construction, anodized and laser etched, nylon dipped sides

#### ENVIRONMENTAL

##### Operating Temperature

0 to +50 °C (32 to 122 °F)

##### Storage Temperature

-20 to +70 °C (32 to 158 °F)

##### Relative Humidity

0 to 95% non-condensing

#### SHIPPING SPECIFICATIONS

**Weight:** 2.22Kg

**Shipping Size:** 290x230x140mm

**Shipping Carton**

Rugged export quality cardboard

E & OE